

\$629,900 - 67 Meadowgrove Lane, Spruce Grove

MLS® #E4448140

\$629,900

4 Bedroom, 3.00 Bathroom, 2,401 sqft
Single Family on 0.00 Acres

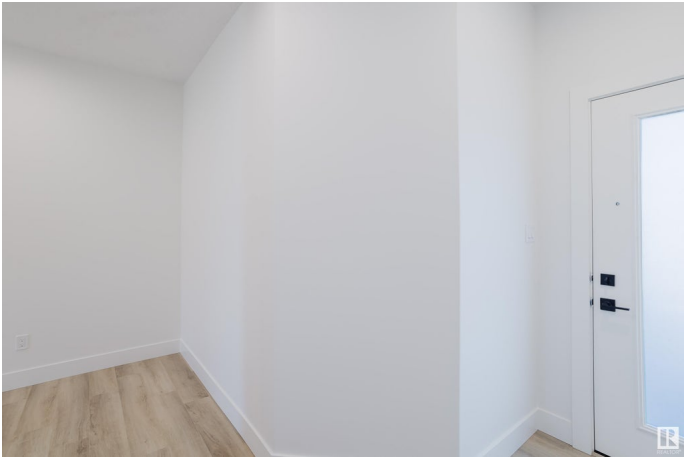
McLaughlin_SPGR, Spruce Grove, AB

This stunning brand new 2-storey home in Spruce Grove offers modern elegance and rare natural beauty, backing onto a serene ravine with a walkout basement for uninterrupted views of trees. The thoughtfully designed main floor features a bright home office, a full bathroom, a roomy step-down living room, and an open-concept layout with two breathtaking open-to-below areas that flood the home with natural light. Upstairs, youâ€™ll find three expansive bedrooms, including a beautiful primary suite and a full bathroom, plus a spacious bonus room with a cozy fireplaceâ€”perfect for growing families or hosting guests. With high-end finishes throughout and a peaceful, scenic setting, this home combines luxury, comfort, and nature in one perfect package.

Built in 2025

Essential Information

MLS® #	E4448140
Price	\$629,900
Bedrooms	4
Bathrooms	3.00
Full Baths	3
Square Footage	2,401
Acres	0.00
Year Built	2025



Type	Single Family
Sub-Type	Detached Single Family
Style	2 Storey
Status	Active

Community Information

Address	67 Meadowgrove Lane
Area	Spruce Grove
Subdivision	McLaughlin_SPGR
City	Spruce Grove
County	ALBERTA
Province	AB
Postal Code	T7X 0W2

Amenities

Amenities	Ceiling 9 ft., Closet Organizers, Deck, Detectors Smoke, Exterior Walls-2"x6", Hot Water Tankless, No Animal Home, No Smoking Home, Vinyl Windows
Parking	Double Garage Attached

Interior

Interior Features	ensuite bathroom
Appliances	Garage Control, Garage Opener, Hood Fan
Heating	Forced Air-1, Natural Gas
Fireplace	Yes
Fireplaces	Remote Control
Stories	2
Has Basement	Yes
Basement	Full, Unfinished

Exterior

Exterior	Wood, Stone, Vinyl
Exterior Features	Backs Onto Park/Trees, Playground Nearby, Schools, Shopping Nearby
Roof	Asphalt Shingles
Construction	Wood, Stone, Vinyl
Foundation	Concrete Perimeter

Additional Information

Date Listed	July 16th, 2025
-------------	-----------------

Days on Market 6

Zoning Zone 91

DATA IS DEEMED RELIABLE BUT IS NOT GUARANTEED ACCURATE BY THE REALTORS® ASSOCIATION OF EDMONTON. COPYRIGHT 2025 BY THE REALTORS® ASSOCIATION OF EDMONTON. ALL RIGHTS RESERVED. Trademarks are owned or controlled by the Canadian Real Estate Association (CREA) and identify real estate professionals who are members of CREA (REALTOR®, REALTORS®) and/or the quality of services they provide (MLS®, Multiple Listing Service®)

Listing information last updated on July 22nd, 2025 at 6:32am MDT