

\$609,900 - 335 29 Street, Edmonton

MLS® #E4447901

\$609,900

4 Bedroom, 3.00 Bathroom, 2,100 sqft

Single Family on 0.00 Acres

Alces, Edmonton, AB

Step into this exceptional 2,100 sq. ft. home in the desirable southwest community of Alces! Boasting 4 generous bedrooms, 2.5 baths, and 9 ft ceilings, this stylish home is designed for comfort and functionality. The main floor features luxury vinyl plank flooring, a sleek electric fireplace, and a spacious open-concept layout ideal for gatherings. Upstairs, enjoy a spacious bonus room, convenient laundry, and a private primary suite with a 5-piece ensuite including dual sinks and a relaxing soaker tub. A separate side entrance leads to the basement, offering potential for future development or a legal suite. The double attached garage provides added storage and convenience. Located near parks, schools, and everyday amenities, this home offers the perfect balance of modern design and practical living. Ideal for growing families, investors, or anyone looking for their forever home—this is your opportunity to own in one of Edmonton's most in-demand new communities!

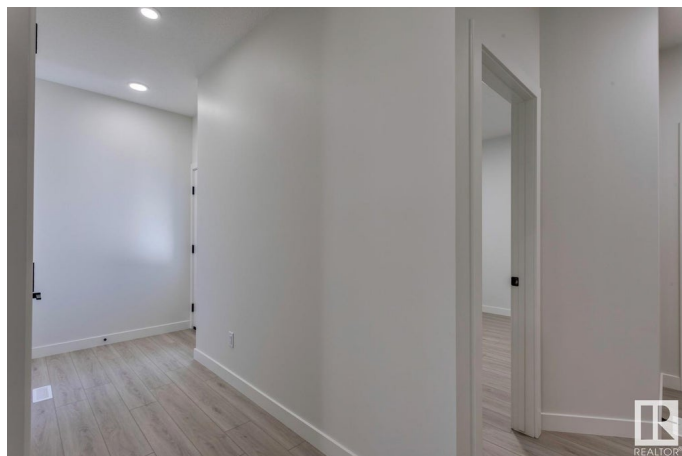
Built in 2025

Essential Information

MLS® # E4447901

Price \$609,900

Bedrooms 4



Bathrooms	3.00
Full Baths	3
Square Footage	2,100
Acres	0.00
Year Built	2025
Type	Single Family
Sub-Type	Detached Single Family
Style	2 Storey
Status	Active

Community Information

Address	335 29 Street
Area	Edmonton
Subdivision	Alces
City	Edmonton
County	ALBERTA
Province	AB
Postal Code	T6X 3E7

Amenities

Amenities	Carbon Monoxide Detectors, Ceiling 9 ft., Exterior Walls- 2"x6", Low Flow Faucets/Shower, Low Flw/Dual Flush Toilet, No Animal Home, No Smoking Home, Smart/Program. Thermostat, Vinyl Windows, See Remarks, 9 ft. Basement Ceiling
Parking	Double Garage Attached

Interior

Interior Features	ensuite bathroom
Appliances	None
Heating	Forced Air-1, Natural Gas
Fireplace	Yes
Fireplaces	Insert
Stories	2
Has Basement	Yes
Basement	Full, Unfinished

Exterior

Exterior	Wood, Stone, Vinyl
Exterior Features	Flat Site, Golf Nearby, Level Land, Playground Nearby, Public

Transportation, Schools, Shopping Nearby, See Remarks

Roof	Asphalt Shingles
Construction	Wood, Stone, Vinyl
Foundation	Concrete Perimeter

School Information

Elementary	Daly Grove School
Middle	Svend Hasen School
High	J. Percy Page High School

Additional Information

Date Listed	July 14th, 2025
Days on Market	8
Zoning	Zone 53

DATA IS DEEMED RELIABLE BUT IS NOT GUARANTEED ACCURATE BY THE REALTORS® ASSOCIATION OF EDMONTON. COPYRIGHT 2025 BY THE REALTORS® ASSOCIATION OF EDMONTON. ALL RIGHTS RESERVED. Trademarks are owned or controlled by the Canadian Real Estate Association (CREA) and identify real estate professionals who are members of CREA (REALTOR®, REALTORS®) and/or the quality of services they provide (MLS®, Multiple Listing Service®)

Listing information last updated on July 21st, 2025 at 9:47pm MDT