

\$498,000 - 10039 87 Avenue, Edmonton

MLS® #E4447515

\$498,000

0 Bedroom, 0.00 Bathroom,
Land Commercial on 0.00 Acres

Strathcona, Edmonton, AB

RSM H12 Zoned Lot in the heart of Strathcona, walking distance to River valley and Whyte Avenue. Close to Downtown and University of Alberta. You can build basement + 3 Storey small apartment building (12 to 16 units, depends on the unit mix). Seller can demolish the current house for buyer as demolition permit is approved.

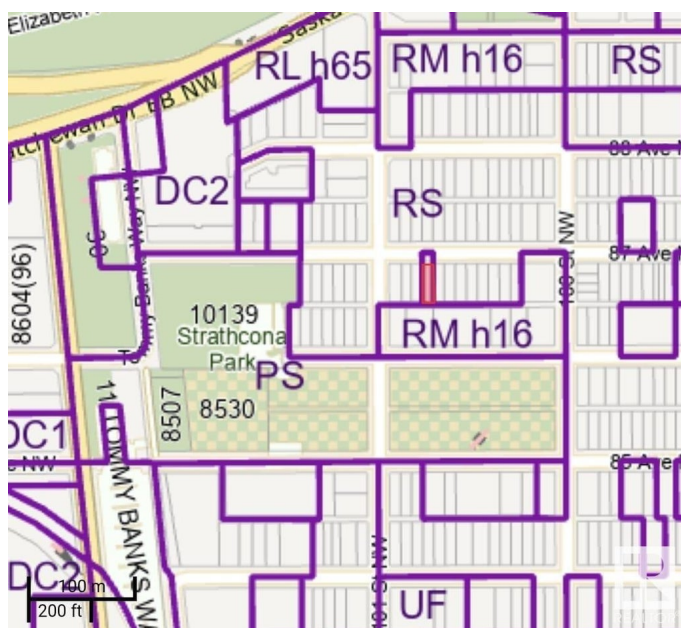
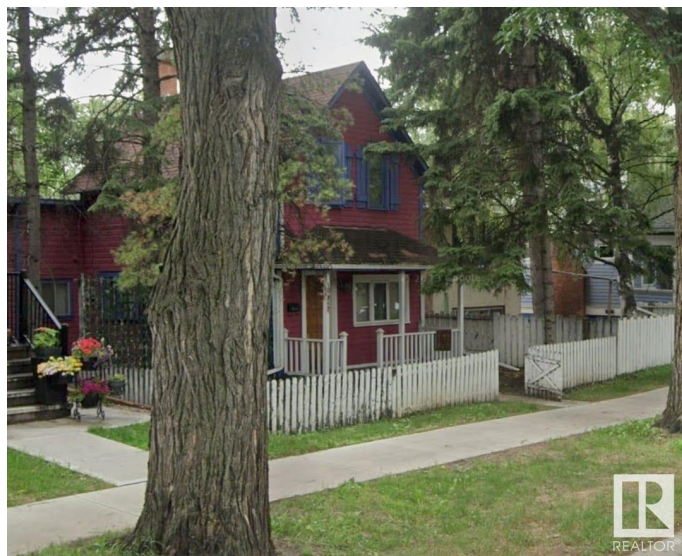
Built in 1910

Essential Information

MLS® #	E4447515
Price	\$498,000
Bathrooms	0.00
Acres	0.00
Year Built	1910
Type	Land Commercial
Status	Active

Community Information

Address	10039 87 Avenue
Area	Edmonton
Subdivision	Strathcona
City	Edmonton
County	ALBERTA
Province	AB
Postal Code	T6E 2P1



Additional Information

Date Listed July 13th, 2025
Days on Market 4
Zoning Zone 15

DATA IS DEEMED RELIABLE BUT IS NOT GUARANTEED ACCURATE BY THE REALTORS® ASSOCIATION OF EDMONTON. COPYRIGHT 2025 BY THE REALTORS® ASSOCIATION OF EDMONTON. ALL RIGHTS RESERVED.Trademarks are owned or controlled by the Canadian Real Estate Association (CREA) and identify real estate professionals who are members of CREA (REALTOR®, REALTORS®) and/or the quality of services they provide (MLS®, Multiple Listing Service®)
Listing information last updated on July 17th, 2025 at 6:32pm MDT