

\$499,800 - 1917 108 Street, Edmonton

MLS® #E4442889

\$499,800

5 Bedroom, 3.00 Bathroom, 1,158 sqft

Single Family on 0.00 Acres

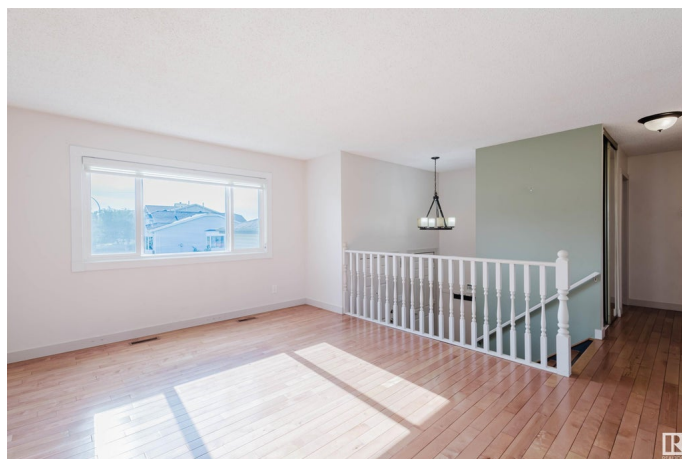
Keheewin, Edmonton, AB

BACKING ONTO Keheewin Park! Renovated 1150+ sqft bi-level home located on a quiet street in Keheewin - Steps to Keheewin Elementary School, YMCA, Heritage shopping center and much more! This fully finished home offers 3+2 bedrooms, 3 full bathrooms & an oversized attached double garage. Main floor features hardwood & tile flooring throughout. Bright west facing living room & formal dining room. Upgraded kitchen has newer full-height cabinets, granite counters and stainless steel appliances. 3 good sized bedrooms and the primary bedroom has a 4 pc ensuite & W/I closet. Bright & well-lit basement has a large family room with a brick faced wood burning fireplace. TWO more bedrooms and a 4pc full bath. Backyard has a newer fence and large deck with a view of the park and a gate for access to the park & green space. Super convenient location within walking distance to Century Park LRT, shopping and all other amenities.

Built in 1987

Essential Information

MLS® #	E4442889
Price	\$499,800
Bedrooms	5
Bathrooms	3.00



Full Baths	3
Square Footage	1,158
Acres	0.00
Year Built	1987
Type	Single Family
Sub-Type	Detached Single Family
Style	Bi-Level
Status	Active

Community Information

Address	1917 108 Street
Area	Edmonton
Subdivision	Keheewin
City	Edmonton
County	ALBERTA
Province	AB
Postal Code	T6J 5V4

Amenities

Amenities	Deck, Detectors Smoke, Vinyl Windows
Parking Spaces	4
Parking	Double Garage Attached

Interior

Interior Features	ensuite bathroom
Appliances	Dishwasher-Built-In, Dryer, Freezer, Garage Control, Garage Opener, Microwave Hood Fan, Refrigerator, Stove-Electric, Washer, Window Coverings
Heating	Forced Air-1, Natural Gas
Stories	2
Has Basement	Yes
Basement	Full, Finished

Exterior

Exterior	Wood, Vinyl
Exterior Features	Fenced, Flat Site, Landscaped, Playground Nearby, Public Transportation, Schools, Shopping Nearby
Roof	Asphalt Shingles
Construction	Wood, Vinyl

Foundation Concrete Perimeter

School Information

Elementary Keheewin School
Middle D.S. MacKenzie School
High Harry Ainlay School

Additional Information

Date Listed June 18th, 2025
Days on Market 20
Zoning Zone 16

DATA IS DEEMED RELIABLE BUT IS NOT GUARANTEED ACCURATE BY THE REALTORS® ASSOCIATION OF EDMONTON. COPYRIGHT 2025 BY THE REALTORS® ASSOCIATION OF EDMONTON. ALL RIGHTS RESERVED.Trademarks are owned or controlled by the Canadian Real Estate Association (CREA) and identify real estate professionals who are members of CREA (REALTOR®, REALTORS®) and/or the quality of services they provide (MLS®, Multiple Listing Service®)
Listing information last updated on July 8th, 2025 at 6:17am MDT