

## \$269,900 - 408 1506 Tamarack Boulevard, Edmonton

MLS® #E4440779

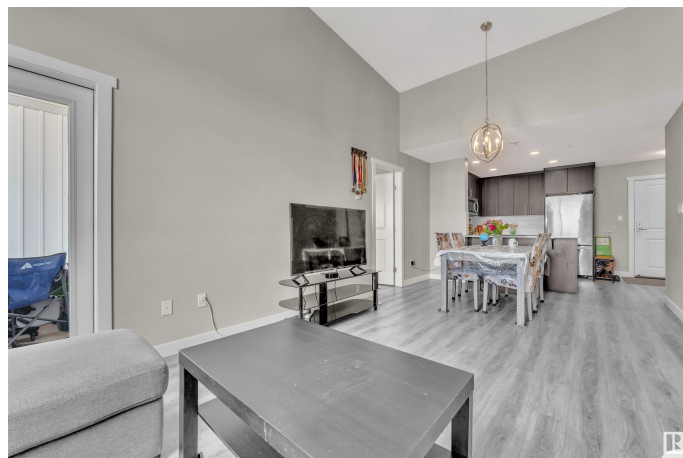
**\$269,900**

2 Bedroom, 2.00 Bathroom, 883 sqft

Condo / Townhouse on 0.00 Acres

Tamarack, Edmonton, AB

Welcome to this bright and modern 2-bedroom, 2-bathroom top-floor condo in Tamarack! This unit features vaulted ceilings, oversized windows, and 7â€• wide vinyl plank flooring with an acoustic underlay throughout. The open-concept kitchen includes quartz countertops, full-height tile backsplash, and a stainless steel Whirlpool appliance package. The spacious island comes with a flush eating ledge, perfect for entertaining. The primary bedroom offers a walk-in closet and ensuite bathroom with stylish Moen chrome fixtures and a deep tub/shower combo. You'll also find a stacked washer and dryer, fire sprinkler system, and pre-wired smart cable/data outlets for added convenience. Step out onto your covered balcony or enjoy building amenities like a rooftop patio, fenced pet park, community garden, and underground heated parking. The building is secured with fob access and offers visitor parking and elevators. Located just steps from shopping, schools, public transit, and major roadwaysâ€”everything you need is



Built in 2019

### Essential Information

MLS® # E4440779

Price \$269,900

Bedrooms	2
Bathrooms	2.00
Full Baths	2
Square Footage	883
Acres	0.00
Year Built	2019
Type	Condo / Townhouse
Sub-Type	Lowrise Apartment
Style	Single Level Apartment
Status	Active

### Community Information

Address	408 1506 Tamarack Boulevard
Area	Edmonton
Subdivision	Tamarack
City	Edmonton
County	ALBERTA
Province	AB
Postal Code	T6T 2E3

### Amenities

Amenities	No Animal Home, No Smoking Home, Parking-Visitor, Secured Parking, Security Door, Rooftop Deck/Patio
Parking	Underground

### Interior

Interior Features	ensuite bathroom
Appliances	Dishwasher-Built-In, Dryer, Garage Opener, Oven-Microwave, Refrigerator, Stove-Countertop Electric, Washer
Heating	Hot Water, Natural Gas
# of Stories	4
Stories	4
Has Basement	Yes
Basement	None, No Basement

### Exterior

Exterior	Wood, Vinyl
Exterior Features	Playground Nearby, Public Transportation, Schools, Shopping Nearby, Vegetable Garden

Roof	EPDM Membrane
Construction	Wood, Vinyl
Foundation	Concrete Perimeter

### **Additional Information**

Date Listed	June 6th, 2025
Days on Market	30
Zoning	Zone 30
Condo Fee	\$539



DATA IS DEEMED RELIABLE BUT IS NOT GUARANTEED ACCURATE BY THE REALTORS® ASSOCIATION OF EDMONTON. COPYRIGHT 2025 BY THE REALTORS® ASSOCIATION OF EDMONTON. ALL RIGHTS RESERVED. Trademarks are owned or controlled by the Canadian Real Estate Association (CREA) and identify real estate professionals who are members of CREA (REALTOR®, REALTORS®) and/or the quality of services they provide (MLS®, Multiple Listing Service®)

Listing information last updated on July 6th, 2025 at 10:33am MDT