

\$318,000 - 70 52343 Rge Road 211, Rural Strathcona County

MLS® #E4440324

\$318,000

2 Bedroom, 1.00 Bathroom, 638 sqft

Rural on 0.58 Acres

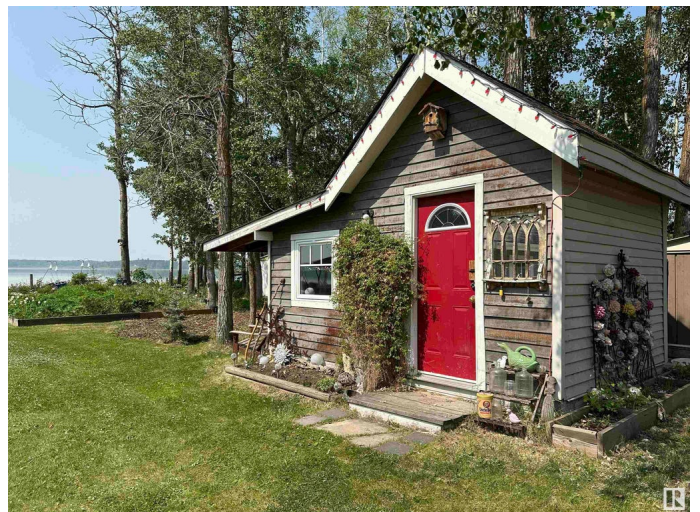
Antler Lake, Rural Strathcona County, AB

Meticulously cared for OPEN CONCEPT COTTAGE on a LARGE DOUBLE WATERFRONT LOT (.58 acre) with stunning view of Antler Lake is now ready for you to enjoy the summer! This bright and relaxing FOUR SEASON cottage features TWO BEDROOM areas with lofts, a LARGE 3 Piece bathroom combined laundry room area complete with a FREESTANDING TUB and LARGE FARMHOUSE SINK. A functional and well designed kitchen that opens up into the living-room with spectacular views of Antler Lake. This beautiful property also includes a separate quaint STUDIO SPACE with electricity that currently acts as extra space for guests! Enjoy this beautiful 4-season cottage as is, or utilize the HUGE DOUBLE LOT to build your lakefront dream home ! Current features of this property include MUNICIPAL WATER and MUNICIPAL SEPTIC, and GAS LINE currently to dwelling.

Built in 1970

Essential Information

MLS® #	E4440324
Price	\$318,000
Bedrooms	2
Bathrooms	1.00



Full Baths	1
Square Footage	638
Acres	0.58
Year Built	1970
Type	Rural
Sub-Type	Detached Single Family
Style	Bungalow
Status	Active

Community Information

Address	70 52343 Rge Road 211
Area	Rural Strathcona County
Subdivision	Antler Lake
City	Rural Strathcona County
County	ALBERTA
Province	AB
Postal Code	T8G 1A6

Amenities

Features	Hot Water Electric, Lake Privileges, No Smoking Home, Open Beam, R.V. Storage
----------	---

Interior

Heating	Baseboard, Wood Stove, Electric, See Remarks
Fireplace	Yes
Stories	1
Has Basement	Yes
Basement	None, No Basement

Exterior

Exterior	Wood
Exterior Features	Backs Onto Lake, Boating, Fenced, Flat Site, Lake Access Property, Lake View, Level Land, Schools, Waterfront Property
Construction	Wood
Foundation	Preserved Wood

Additional Information

Date Listed	June 4th, 2025
Days on Market	19

Zoning

Zone 84

DATA IS DEEMED RELIABLE BUT IS NOT GUARANTEED ACCURATE BY THE REALTORS® ASSOCIATION OF EDMONTON. COPYRIGHT 2025 BY THE REALTORS® ASSOCIATION OF EDMONTON. ALL RIGHTS RESERVED. Trademarks are owned or controlled by the Canadian Real Estate Association (CREA) and identify real estate professionals who are members of CREA (REALTOR®, REALTORS®) and/or the quality of services they provide (MLS®, Multiple Listing Service®)

Listing information last updated on June 23rd, 2025 at 4:47am MDT