

\$530,000 - 98 Penn Place, Spruce Grove

MLS® #E4439454

\$530,000

4 Bedroom, 3.00 Bathroom, 1,822 sqft

Single Family on 0.00 Acres

Prescott, Spruce Grove, AB

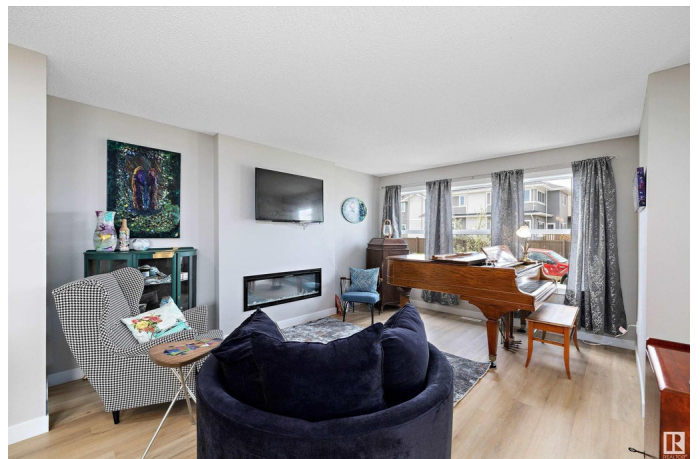
Welcome to Prescott One of Spruce Grove's Most Sought-After Neighbourhoods! Discover this stunning 4-bdrm, 2-story home, expertly crafted by Crystal Creek Homes a true standout in both design and quality. Perfectly situated near top-rated schools, parks, playgrounds, and every amenity your family needs, this home offers exceptional convenience and lifestyle. Step inside and be captivated by the open-concept layout. Lovely finishes and upgraded features are found throughout, showcasing exquisite craftsmanship & meticulous attention to detail. The main floor bdrm or den is perfect for a home office ideal for today work from home lifestyle. Upstairs, an east-facing rooftop patio awaits, with direct access off the primary. offering the perfect space to enjoy your morning coffee in the sun. This home also features a separate side entrance, providing an excellent opportunity for a rental or in law suite. Perfectly located 15 minutes west of Edmonton, within walking distance to Jubilee Park & Prescott School.

Built in 2024

Essential Information

MLS® # E4439454

Price \$530,000



Bedrooms	4
Bathrooms	3.00
Full Baths	3
Square Footage	1,822
Acres	0.00
Year Built	2024
Type	Single Family
Sub-Type	Detached Single Family
Style	2 Storey
Status	Active

Community Information

Address	98 Penn Place
Area	Spruce Grove
Subdivision	Prescott
City	Spruce Grove
County	ALBERTA
Province	AB
Postal Code	T7Z 2W7

Amenities

Amenities	On Street Parking, Detectors Smoke, No Animal Home, No Smoking Home, Natural Gas BBQ Hookup, Rooftop Deck/Patio
Parking	Double Garage Attached

Interior

Interior Features	ensuite bathroom
Appliances	Dishwasher-Built-In, Dryer, Microwave Hood Fan, Refrigerator, Stove-Gas, Washer
Heating	Forced Air-1, Natural Gas
Fireplace	Yes
Fireplaces	None
Stories	2
Has Basement	Yes
Basement	Full, Unfinished

Exterior

Exterior	Wood, Vinyl
Exterior Features	Back Lane, Flat Site, Golf Nearby, Low Maintenance Landscape,

Playground Nearby, Public Swimming Pool, Public Transportation,
Schools, Shopping Nearby

Roof	Asphalt Shingles
Construction	Wood, Vinyl
Foundation	Concrete Perimeter

School Information

Elementary	Presscott
High	Composit

Additional Information

Date Listed	May 30th, 2025
Days on Market	5
Zoning	Zone 91

DATA IS DEEMED RELIABLE BUT IS NOT GUARANTEED ACCURATE BY THE REALTORS® ASSOCIATION OF EDMONTON. COPYRIGHT 2025 BY THE REALTORS® ASSOCIATION OF EDMONTON. ALL RIGHTS RESERVED. Trademarks are owned or controlled by the Canadian Real Estate Association (CREA) and identify real estate professionals who are members of CREA (REALTOR®, REALTORS®) and/or the quality of services they provide (MLS®, Multiple Listing Service®)

Listing information last updated on June 4th, 2025 at 10:47am MDT