

\$429,800 - 16329 134 Street, Edmonton

MLS® #E4439185

\$429,800

4 Bedroom, 3.50 Bathroom, 1,459 sqft

Single Family on 0.00 Acres

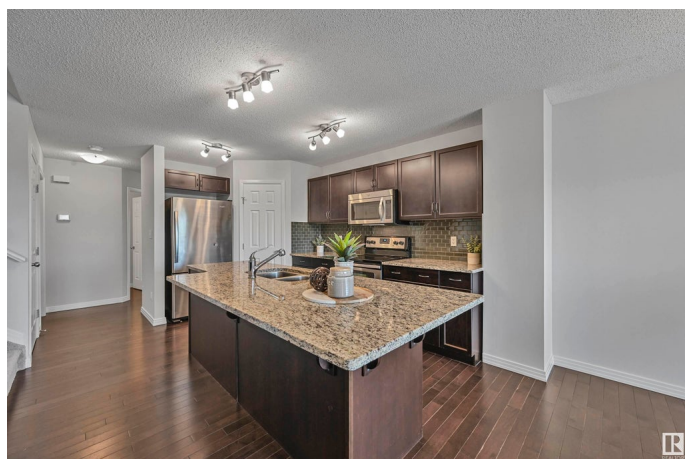
Carlton, Edmonton, AB

Move-in ready duplex BACKING A PARK/LAKE in a thriving community! Perfect for a growing family or investor with nearly 1,500sf above grade PLUS a FULLY FINISHED BASEMENT. Main level boasts open concept living room, with cozy fireplace, dining nook and spacious kitchen. Enjoy granite counters, sizeable pantry for extra storage & stainless steel appliances. Walkout on your raised deck and soak in pond views in time for summer! Upstairs find 3 bedrooms and 2 full bathrooms. Enjoy waking up to sunny, morning pond views from the primary suite. Plus large walk-in closet and ensuite! Fully finished basement offers a second living area/recreation space, 4th bedroom and 3rd full bathroom. Features include fresh paint, newer carpets, main floor laundry and attached/enclosed single garage. Great proximity to shopping, schools, restaurants and major arteries. Plus walking trails at your fingertips. A must see!

Built in 2012

Essential Information

MLS® #	E4439185
Price	\$429,800
Bedrooms	4
Bathrooms	3.50



Full Baths	3
Half Baths	1
Square Footage	1,459
Acres	0.00
Year Built	2012
Type	Single Family
Sub-Type	Half Duplex
Style	2 Storey
Status	Active

Community Information

Address	16329 134 Street
Area	Edmonton
Subdivision	Carlton
City	Edmonton
County	ALBERTA
Province	AB
Postal Code	T6V 0G4

Amenities

Amenities	On Street Parking, Deck, See Remarks
Parking Spaces	2
Parking	Single Garage Attached

Interior

Interior Features	ensuite bathroom
Appliances	Dishwasher-Built-In, Dryer, Garage Control, Garage Opener, Microwave Hood Fan, Refrigerator, Stove-Electric, Washer
Heating	Forced Air-1, Natural Gas
Fireplace	Yes
Fireplaces	Mantel
Stories	3
Has Basement	Yes
Basement	Full, Finished

Exterior

Exterior	Wood, Stone, Vinyl
Exterior Features	Backs Onto Park/Trees, Fenced, Landscaped, Schools, Shopping Nearby, See Remarks

Roof	Asphalt Shingles
Construction	Wood, Stone, Vinyl
Foundation	Concrete Perimeter

School Information

Elementary	St.Lucy/ElizabethFinch
Middle	JohnThompson/ElizabethFinc
High	O'Leary/RossSheppard

Additional Information

Date Listed	May 29th, 2025
Days on Market	4
Zoning	Zone 27

DATA IS DEEMED RELIABLE BUT IS NOT GUARANTEED ACCURATE BY THE REALTORS® ASSOCIATION OF EDMONTON. COPYRIGHT 2025 BY THE REALTORS® ASSOCIATION OF EDMONTON. ALL RIGHTS RESERVED.Trademarks are owned or controlled by the Canadian Real Estate Association (CREA) and identify real estate professionals who are members of CREA (REALTOR®, REALTORS®) and/or the quality of services they provide (MLS®, Multiple Listing Service®)

Listing information last updated on June 2nd, 2025 at 1:33pm MDT