

Courtesy Of Steve P Kehoe Of 2% Realty Pro

## \$599,900 - 3904 5 Street, Edmonton

MLS® #E4439114

**\$599,900**

3 Bedroom, 2.50 Bathroom, 1,713 sqft

Single Family on 0.00 Acres

Maple Crest, Edmonton, AB

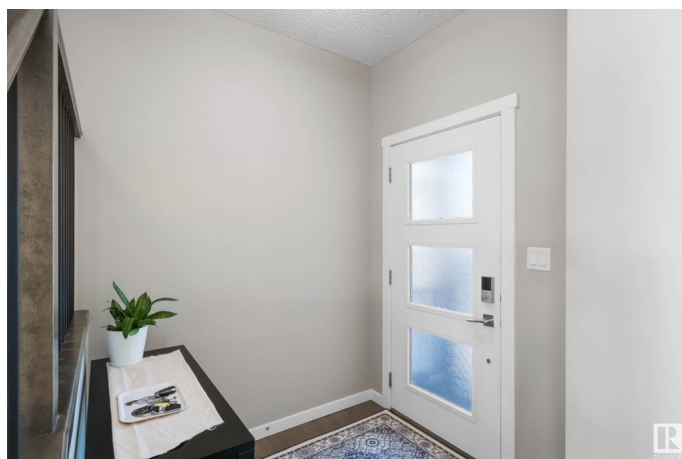
Welcome to this beautiful 2-storey home located in the desirable community of Maple Crest that is perfectly situated on a quiet street and backing onto lush green space. Step inside to an open concept main floor featuring 9-foot ceilings, elegant engineered hardwood floors, and a cozy gas fireplace in the living room—perfect for relaxing or entertaining. The chef-inspired kitchen boasts stainless steel appliances, sleek quartz countertops, rich maple cabinetry, a spacious island with breakfast bar, and a walk-through pantry for added convenience. Upstairs, you’ll find 3 generous bedrooms, including a spacious primary suite complete with a walk-in closet and a 4-piece ensuite. Enjoy the outdoors in your sun-drenched, south-facing pie-shaped backyard. Designed for minimal upkeep, it features a large 26x16 composite deck, synthetic lawn, and elegant stamped concrete—perfect for summer gatherings or quiet evenings. Additional highlights include an oversized 23x24 attached, heated garage and central A/C!

Built in 2018

### Essential Information

MLS® # E4439114

Price \$599,900



|                |                        |
|----------------|------------------------|
| Bedrooms       | 3                      |
| Bathrooms      | 2.50                   |
| Full Baths     | 2                      |
| Half Baths     | 1                      |
| Square Footage | 1,713                  |
| Acres          | 0.00                   |
| Year Built     | 2018                   |
| Type           | Single Family          |
| Sub-Type       | Detached Single Family |
| Style          | 2 Storey               |
| Status         | Active                 |

### Community Information

|             |               |
|-------------|---------------|
| Address     | 3904 5 Street |
| Area        | Edmonton      |
| Subdivision | Maple Crest   |
| City        | Edmonton      |
| County      | ALBERTA       |
| Province    | AB            |
| Postal Code | T6T 2G4       |

### Amenities

|           |   |
|-----------|---|
| Amenities | Ceiling 9 ft., Deck, No Smoking Home                        |
| Parking   | 220 Volt Wiring, Double Garage Attached, Heated, Over Sized |

### Interior

|                   |   |
|-------------------|---|
| Interior Features | ensuite bathroom  |
| Appliances        | Dishwasher-Built-In, Dryer, Garage Opener, Microwave Hood Fan, Refrigerator, Storage Shed, Stove-Electric, Washer, Window Coverings |
| Heating           | Forced Air-1, Natural Gas   |
| Fireplace         | Yes   |
| Fireplaces        | Mantel  |
| Stories           | 2   |
| Has Basement      | Yes   |
| Basement          | Full, Unfinished  |

### Exterior

|                   |  |
|-------------------|--|
| Exterior          | Wood, Vinyl  |
| Exterior Features | Backs    Onto    Park/Trees,    Cul-De-Sac,    Fenced,    Low    Maintenance |

Landscape, No Back Lane, No Through Road, Playground Nearby,  
Public Transportation, Schools, Shopping Nearby

|              |                    |
|--------------|--------------------|
| Roof         | Asphalt Shingles   |
| Construction | Wood, Vinyl        |
| Foundation   | Concrete Perimeter |

### **Additional Information**

|                |                |
|----------------|----------------|
| Date Listed    | May 29th, 2025 |
| Days on Market | 5              |
| Zoning         | Zone 30        |

DATA IS DEEMED RELIABLE BUT IS NOT GUARANTEED ACCURATE BY THE REALTORS® ASSOCIATION OF EDMONTON. COPYRIGHT 2025 BY THE REALTORS® ASSOCIATION OF EDMONTON. ALL RIGHTS RESERVED. Trademarks are owned or controlled by the Canadian Real Estate Association (CREA) and identify real estate professionals who are members of CREA (REALTOR®, REALTORS®) and/or the quality of services they provide (MLS®, Multiple Listing Service®)

Listing information last updated on June 3rd, 2025 at 2:17am MDT