

## \$599,900 - 109 Hayward Crescent, Edmonton

MLS® #E4439042

**\$599,900**

4 Bedroom, 3.50 Bathroom, 1,877 sqft

Single Family on 0.00 Acres

Hodgson, Edmonton, AB

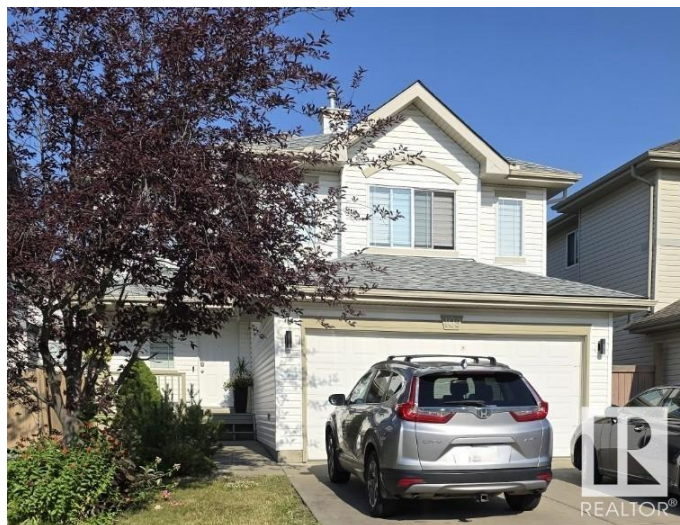
Beautifully upgraded and updated 2 storey home, just under 1900 sqft plus a fully developed basement. This gorgeous home has 3 + 1 bedrooms, 3.5 baths. The main floor is open concept living and has 9 ft ceilings in the spacious living room which also features a tile surround fireplace. The kitchen is perfect, loads of cupboards and granite counter space, stainless steel appliances, huge island and a garden door from the dining area leading out to your nicely landscaped backyard & large deck. There is a huge bonus room on the upper level with big windows bringing in tons of beautiful natural light. The primary bedroom is large enough to accommodate a king size bed, a separate sitting area, along with a full four pce ensuite & spacious walk in closet. Two additional good sized bedrooms, and a full 4 pce bath up. Very flexible options in the fully developed basement for whatever suits your needs. Rec room, bedroom, both? Full bath and walk in closet/storage. Fantastic Crescent location in Hodgson!

Built in 2003

### Essential Information

MLS® # E4439042

Price \$599,900



Bedrooms	4
Bathrooms	3.50
Full Baths	3
Half Baths	1
Square Footage	1,877
Acres	0.00
Year Built	2003
Type	Single Family
Sub-Type	Detached Single Family
Style	2 Storey
Status	Active

### Community Information

Address	109 Hayward Crescent
Area	Edmonton
Subdivision	Hodgson
City	Edmonton
County	ALBERTA
Province	AB
Postal Code	T6R 3G2

### Amenities

Amenities	Ceiling 9 ft., Deck, Front Porch
Parking	Double Garage Attached

### Interior

Interior Features	ensuite bathroom
Appliances	Dishwasher-Built-In, Dryer, Garage Control, Garage Opener, Microwave Hood Fan, Refrigerator, Stove-Electric, Washer, Window Coverings
Heating	Forced Air-1, Natural Gas
Stories	3
Has Basement	Yes
Basement	Full, Finished

### Exterior

Exterior	Wood, Vinyl
Exterior Features	Fenced, Level Land, Playground Nearby
Roof	Asphalt Shingles
Construction	Wood, Vinyl

Foundation                      Concrete Perimeter

**Additional Information**

Date Listed                      May 28th, 2025  
Days on Market                7  
Zoning                              Zone 14  
HOA Fees                         175  
HOA Fees Freq.                Annually

DATA IS DEEMED RELIABLE BUT IS NOT GUARANTEED ACCURATE BY THE REALTORS® ASSOCIATION OF EDMONTON. COPYRIGHT 2025 BY THE REALTORS® ASSOCIATION OF EDMONTON. ALL RIGHTS RESERVED.Trademarks are owned or controlled by the Canadian Real Estate Association (CREA) and identify real estate professionals who are members of CREA (REALTOR®, REALTORS®) and/or the quality of services they provide (MLS®, Multiple Listing Service®)  
Listing information last updated on June 4th, 2025 at 5:48pm MDT