

## \$939,000 - 605 14105 West Block Drive, Edmonton

MLS® #E4439004

**\$939,000**

2 Bedroom, 2.00 Bathroom, 1,546 sqft

Condo / Townhouse on 0.00 Acres

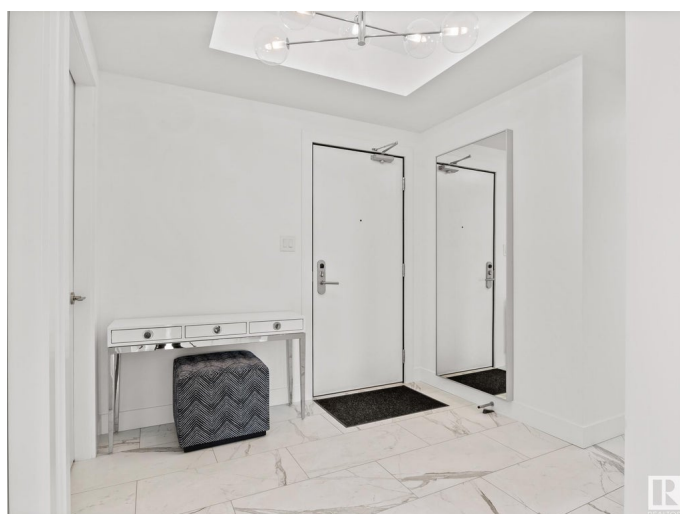
Glenora, Edmonton, AB

Luxurious 2-bed + den & 2-bath corner unit offering panoramic views, premium upgrades, & exceptional value. This open-concept layout features floor-to-ceiling windows, upgraded Bosch appliances & custom wet bar. The primary suite boasts a custom shoe-closet & spa-like ensuite with heated floors & tiled shower. Enjoy an in-suite storage room & two titled underground parking stalls, each with a secure storage cage. Building amenities include a concierge; car wash; hotel-inspired guest suite; expansive rooftop lounge; indoor social space with kitchen, boardroom & billiards; fitness centre; pet wash & dog run. Restaurants, boutiques, the new LRT line, & more are an elevator ride away. Access shopping centres, UAlberta, the river valley, & the downtown core within minutes. Located in one of Edmonton's most prestigious communities, this residence offers a luxury lifestyle for professionals, families, and retirees alike.

Built in 2019

### Essential Information

MLS® #	E4439004
Price	\$939,000
Bedrooms	2
Bathrooms	2.00



Full Baths	2
Square Footage	1,546
Acres	0.00
Year Built	2019
Type	Condo / Townhouse
Sub-Type	Apartment High Rise
Style	Single Level Apartment
Status	Active

### Community Information

Address	605 14105 West Block Drive
Area	Edmonton
Subdivision	Glenora
City	Edmonton
County	ALBERTA
Province	AB
Postal Code	T5N 1L5

### Amenities

Amenities	Air Conditioner, Ceiling 9 ft., Closet Organizers, Exercise Room, Guest Suite, No Animal Home, No Smoking Home, Parking-Visitor, Party Room, Recreation Room/Centre, Secured Parking, Security Door, Sprinkler System-Fire, HRV System, Concierge Service, Storage Cage, Rooftop Deck/Patio
Parking Spaces	2
Parking	Underground

### Interior

Interior Features	ensuite bathroom
Appliances	Air Conditioning-Central, Dishwasher-Built-In, Dryer, Oven-Built-In, Oven-Microwave, Refrigerator, Washer, Window Coverings, Wine/Beverage Cooler
Heating	Heat Pump, Natural Gas
# of Stories	16
Stories	1
Has Basement	Yes
Basement	None, No Basement

### Exterior

Exterior	Concrete
----------	----------

Exterior Features	Back Lane, Level Land, Paved Lane, Public Transportation, Ravine View, River Valley View, Schools, Shopping Nearby, View City, View Downtown
Roof	EPDM Membrane
Construction	Concrete
Foundation	Concrete Perimeter

### School Information

Middle	Westminster Jr High School
--------	----------------------------

### Additional Information

Date Listed	May 27th, 2025
Days on Market	24
Zoning	Zone 11
Condo Fee	\$1,300

DATA IS DEEMED RELIABLE BUT IS NOT GUARANTEED ACCURATE BY THE REALTORS® ASSOCIATION OF EDMONTON. COPYRIGHT 2025 BY THE REALTORS® ASSOCIATION OF EDMONTON. ALL RIGHTS RESERVED. Trademarks are owned or controlled by the Canadian Real Estate Association (CREA) and identify real estate professionals who are members of CREA (REALTOR®, REALTORS®) and/or the quality of services they provide (MLS®, Multiple Listing Service®)

Listing information last updated on June 20th, 2025 at 11:32am MDT