

\$599,900 - 1206 Secord Landing, Edmonton

MLS® #E4438982

\$599,900

3 Bedroom, 2.50 Bathroom, 2,110 sqft

Single Family on 0.00 Acres

Secord, Edmonton, AB

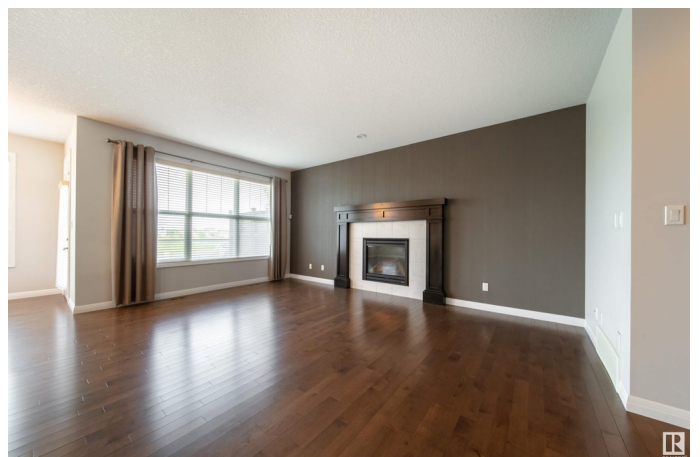
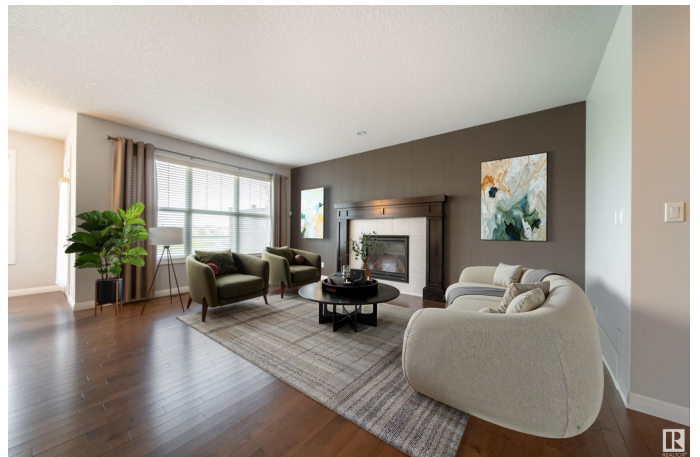
RARE POND-BACKING GEM with a TRIPLE TANDEM GARAGE! This stunning 3 bed, 2.5 bath home offers nearly 2,100 sq.ft of luxury living, fully fenced & landscaped yard backing onto a tranquil pond . The main floor features soaring 9-ft ceilings, rich hardwood floors & spacious living room with a cozy gas fireplace. The executive kitchen is a chef's dream—built-in stainless steel appliances, gas cooktop, quartz countertops, large island, walk-in pantry and elegant maple cabinetry. Upstairs boasts a bright bonus room, two large bedrooms, full bath, convenient laundry, & a spacious primary suite with a 5-piece spa-like ensuite & large walk-in closet. Enjoy year-round comfort with Central A/C and water purification system. The heated triple tandem garage includes hot/cold water, floor drain, & room for all your toys. In the family friendly community of Secord steps from schools, parks, new Rec Centre, shopping, transit & quick access to Anthony Henday & Hwy 16A. Luxury, location, and lifestyle—this home has it all!

Built in 2012

Essential Information

MLS® # E4438982

Price \$599,900



Bedrooms	3
Bathrooms	2.50
Full Baths	2
Half Baths	1
Square Footage	2,110
Acres	0.00
Year Built	2012
Type	Single Family
Sub-Type	Detached Single Family
Style	2 Storey
Status	Active

Community Information

Address	1206 Secord Landing
Area	Edmonton
Subdivision	Secord
City	Edmonton
County	ALBERTA
Province	AB
Postal Code	T5T 4N3

Amenities

Amenities	Air Conditioner, Ceiling 9 ft., Deck, Vinyl Windows, HRV System, Natural Gas BBQ Hookup
Parking Spaces	5
Parking	Double Garage Attached, Over Sized, Tandem, Triple Garage Attached

Interior

Interior Features	ensuite bathroom
Appliances	Air Conditioning-Central, Dishwasher-Built-In, Dryer, Garage Control, Garage Opener, Oven-Built-In, Refrigerator, Stove-Countertop Gas, Washer, Water Distiller, Water Softener, Window Coverings, Garage Heater
Heating	Forced Air-1, Natural Gas
Fireplace	Yes
Fireplaces	Mantel
Stories	2
Has Basement	Yes
Basement	Full, Unfinished

Exterior

Exterior	Wood, Stone, Vinyl
Exterior Features	Fenced, Golf Nearby, Landscaped, Low Maintenance Landscape, Playground Nearby, Public Transportation, Schools, Shopping Nearby
Roof	Asphalt Shingles
Construction	Wood, Stone, Vinyl
Foundation	Concrete Perimeter

School Information

Elementary	David Thomas King School
Middle	David Thomas King School
High	Jasper Place School

Additional Information

Date Listed	May 28th, 2025
Days on Market	5
Zoning	Zone 58

DATA IS DEEMED RELIABLE BUT IS NOT GUARANTEED ACCURATE BY THE REALTORS® ASSOCIATION OF EDMONTON. COPYRIGHT 2025 BY THE REALTORS® ASSOCIATION OF EDMONTON. ALL RIGHTS RESERVED.Trademarks are owned or controlled by the Canadian Real Estate Association (CREA) and identify real estate professionals who are members of CREA (REALTOR®, REALTORS®) and/or the quality of services they provide (MLS®, Multiple Listing Service®)

Listing information last updated on June 2nd, 2025 at 1:47pm MDT