

\$499,900 - 66 57126 Rge Road 233, Rural Sturgeon County

MLS® #E4438259

\$499,900

4 Bedroom, 3.00 Bathroom, 1,384 sqft
Rural on 2.20 Acres

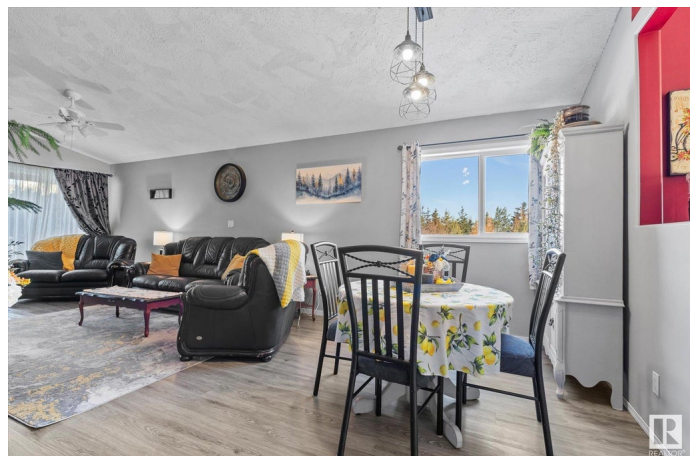
Hillsborough, Rural Sturgeon County, AB

PRICED TO SELL! ACREAGE LIVING UNDER \$500K? WOW! Perched on a hill with a view, this bungalow is ready for a new family! Open concept living and dining room with vinyl plank flooring through the main level. Perfect for pets and children. Bright and sunny kitchen with tons of cabinet space, a large pantry and island. Appliances were replaced in 2021. Garden doors lead you to the east facing deck with gazebo and area for entertaining or enjoying your morning coffee in the sunshine. On the main level you'll also find a large laundry room, 3 pc bath & 1 bedroom plus a HUGE primary bedroom. Large walk in closet and a 4 pc ensuite with jetted tub. Downstairs is almost complete, just needs finishing touch. Large family room, a new 4 pc bath and 2 additional bedrooms. Loads of storage space. An oversized, 23' 6" x 23' & 6" attached garage will fit cars or a pick up truck. No snow removal from your car in the mornings! 5 minutes to Bon Accord, 10 min to Gibbons, 30 min to Edmonton. Quick possession available.

Built in 2003

Essential Information

MLS® # E4438259



Price	\$499,900
Bedrooms	4
Bathrooms	3.00
Full Baths	3
Square Footage	1,384
Acres	2.20
Year Built	2003
Type	Rural
Sub-Type	Detached Single Family
Style	Bungalow
Status	Active

Community Information

Address	66 57126 Rge Road 233
Area	Rural Sturgeon County
Subdivision	Hillsborough
City	Rural Sturgeon County
County	ALBERTA
Province	AB
Postal Code	T0A 1N5

Amenities

Features	Deck, Front Porch, Gazebo, Hot Water Natural Gas, Vaulted Ceiling
----------	---

Interior

Interior Features	ensuite bathroom
Heating	Forced Air-1, Natural Gas
Fireplace	Yes
Stories	1
Has Basement	Yes
Basement	Full, Partially Finished

Exterior

Exterior	Wood
Exterior Features	Fruit Trees/Shrubs, Hillside, Landscaped
Construction	Wood
Foundation	Concrete Perimeter

Additional Information

Date Listed May 23rd, 2025

Days on Market 6

Zoning Zone 60

DATA IS DEEMED RELIABLE BUT IS NOT GUARANTEED ACCURATE BY THE REALTORS® ASSOCIATION OF EDMONTON. COPYRIGHT 2025 BY THE REALTORS® ASSOCIATION OF EDMONTON. ALL RIGHTS RESERVED. Trademarks are owned or controlled by the Canadian Real Estate Association (CREA) and identify real estate professionals who are members of CREA (REALTOR®, REALTORS®) and/or the quality of services they provide (MLS®, Multiple Listing Service®)

Listing information last updated on May 29th, 2025 at 5:32pm MDT