

\$698,800 - 353 Cowan Crescent, Sherwood Park

MLS® #E4438112

\$698,800

3 Bedroom, 3.50 Bathroom, 2,085 sqft

Single Family on 0.00 Acres

Lakeland Ridge, Sherwood Park, AB

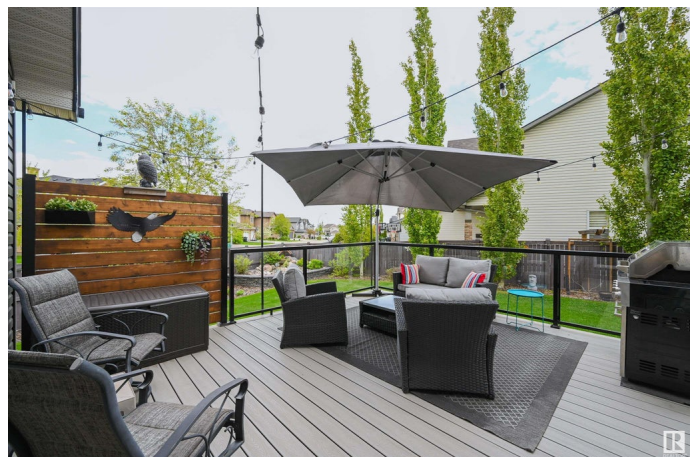
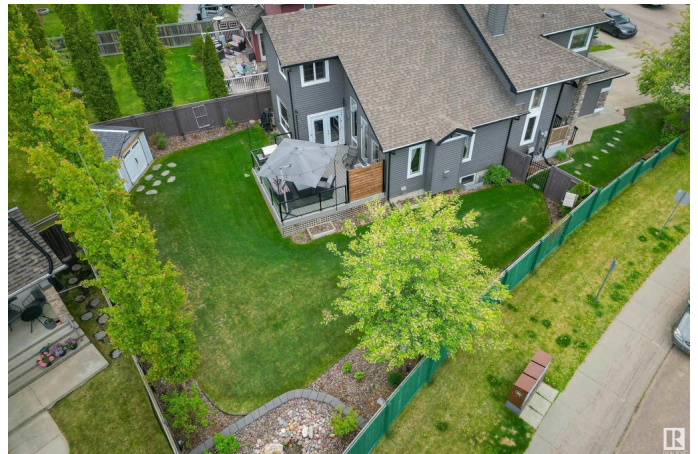
Welcome home to this GORGEOUS UPGRADED, meticulous home on a large CORNER LOT in the heart of LAKELAND RIDGE conveniently located close to schools, parks & walking paths. The main floor features a spacious entrance leading to an open concept main floor plan with VAULTED CEILINGS in the living room & a corner gas fireplace with stone accents. The gourmet kitchen has espresso color cabinetry with lots of storage, granite counters, eating bar, S/S appliances & pantry. Good size dining room that leads out to the deck. To complete the main floor there is a den, laundry room, 2 piece bathroom & gleaming hardwood & tile flooring. Upstairs there are 2 bedrooms, a 4 piece bathroom & the primary suite with a walk-in closet & a spa-like ensuite with a jacuzzi tub, walk-in shower & heated tile floors. The fully finished basement has a family room with a gas fireplace w stone accents, a games room with a wet bar & a 3 piece bathroom. Gorgeous fenced yard with a water feature. Heated garage. Shows very well!

Built in 2007

Essential Information

MLS® # E4438112

Price \$698,800



| | |
|----------------|------------------------|
| Bedrooms | 3 |
| Bathrooms | 3.50 |
| Full Baths | 3 |
| Half Baths | 1 |
| Square Footage | 2,085 |
| Acres | 0.00 |
| Year Built | 2007 |
| Type | Single Family |
| Sub-Type | Detached Single Family |
| Style | 2 Storey |
| Status | Active |

Community Information

| | |
|-------------|--------------------|
| Address | 353 Cowan Crescent |
| Area | Sherwood Park |
| Subdivision | Lakeland Ridge |
| City | Sherwood Park |
| County | ALBERTA |
| Province | AB |
| Postal Code | T8H 0E6 |

Amenities

| | |
|----------------|-------------------------------------------------------------------------|
| Amenities | Air Conditioner, Deck, Vaulted Ceiling, Wet Bar, 9 ft. Basement Ceiling |
| Parking Spaces | 4 |
| Parking | Double Garage Attached |

Interior

| | |
|-------------------|--------------------------------------------------------------------------------------------------------------------------------------|
| Interior Features | ensuite bathroom |
| Appliances | Air Conditioning-Central, Dishwasher-Built-In, Dryer, Hood Fan, Refrigerator, Storage Shed, Stove-Electric, Washer, Window Coverings |
| Heating | Forced Air-1, Natural Gas |
| Fireplace | Yes |
| Fireplaces | Mantel, Stone Facing |
| Stories | 3 |
| Has Basement | Yes |
| Basement | Full, Finished |

Exterior

| | |
|----------|--------------------|
| Exterior | Wood, Stone, Vinyl |
|----------|--------------------|

| | |
|-------------------|-----------------------------------------------------------------------------|
| Exterior Features | Corner Lot, Fenced, Landscaped, Playground Nearby, Schools, Shopping Nearby |
| Roof | Asphalt Shingles |
| Construction | Wood, Stone, Vinyl |
| Foundation | Concrete Perimeter |

School Information

| | |
|------------|---------------------|
| Elementary | Lakeland Ridge |
| Middle | Lakeland Ridge |
| High | Salisbury Composite |

Additional Information

| | |
|----------------|----------------|
| Date Listed | May 23rd, 2025 |
| Days on Market | 6 |
| Zoning | Zone 25 |

DATA IS DEEMED RELIABLE BUT IS NOT GUARANTEED ACCURATE BY THE REALTORS® ASSOCIATION OF EDMONTON. COPYRIGHT 2025 BY THE REALTORS® ASSOCIATION OF EDMONTON. ALL RIGHTS RESERVED.Trademarks are owned or controlled by the Canadian Real Estate Association (CREA) and identify real estate professionals who are members of CREA (REALTOR®, REALTORS®) and/or the quality of services they provide (MLS®, Multiple Listing Service®)

Listing information last updated on May 29th, 2025 at 1:02pm MDT