

\$1,740,000 - 9947 80 Avenue, Edmonton

MLS® #E4437566

\$1,740,000

0 Bedroom, 0.00 Bathroom,
Land Commercial on 0.00 Acres

Ritchie, Edmonton, AB

Ritchie LAND ASSEMBLY 100 X 132', already RM(medium scale-4-8 storeys) zoned lots. In the heart of ritchie, with a walkscore of 97 this community is prime for multi family. Minutes from UofA and downtown, with vibrant breweries and cafes just waking distances away, these prime oppurtutniites DO NOT come to market often. Take advantage of all the booming rental economy and prime location now. House is rentable while planning. Investment won't last long!!

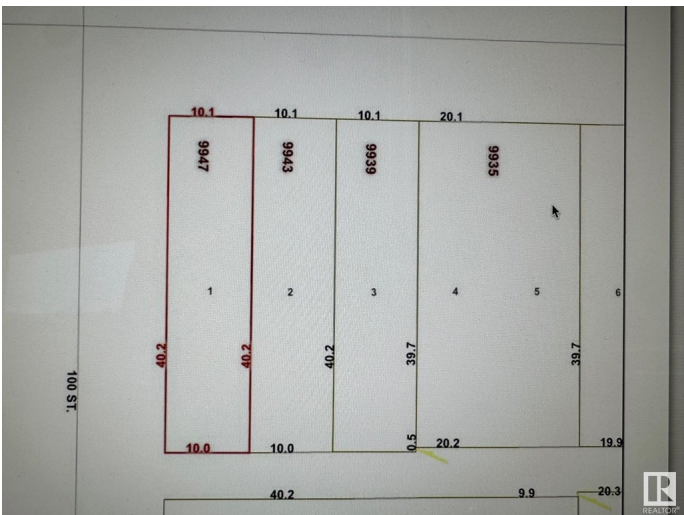
Built in 1937

Essential Information

| | |
|------------|-----------------|
| MLS® # | E4437566 |
| Price | \$1,740,000 |
| Bathrooms | 0.00 |
| Acres | 0.00 |
| Year Built | 1937 |
| Type | Land Commercial |
| Status | Active |

Community Information

| | |
|-------------|----------------|
| Address | 9947 80 Avenue |
| Area | Edmonton |
| Subdivision | Ritchie |
| City | Edmonton |
| County | ALBERTA |



Province AB
Postal Code T6E 1T2

Exterior

Exterior See Remarks
Construction See Remarks

Additional Information

Date Listed May 21st, 2025
Days on Market 20
Zoning Zone 17

DATA IS DEEMED RELIABLE BUT IS NOT GUARANTEED ACCURATE BY THE REALTORS® ASSOCIATION OF EDMONTON. COPYRIGHT 2025 BY THE REALTORS® ASSOCIATION OF EDMONTON. ALL RIGHTS RESERVED.Trademarks are owned or controlled by the Canadian Real Estate Association (CREA) and identify real estate professionals who are members of CREA (REALTOR®, REALTORS®) and/or the quality of services they provide (MLS®, Multiple Listing Service®)
Listing information last updated on June 10th, 2025 at 6:17pm MDT