

\$186,000 - 208 6220 134 Avenue, Edmonton

MLS® #E4436957

\$186,000

2 Bedroom, 2.00 Bathroom, 949 sqft

Condo / Townhouse on 0.00 Acres

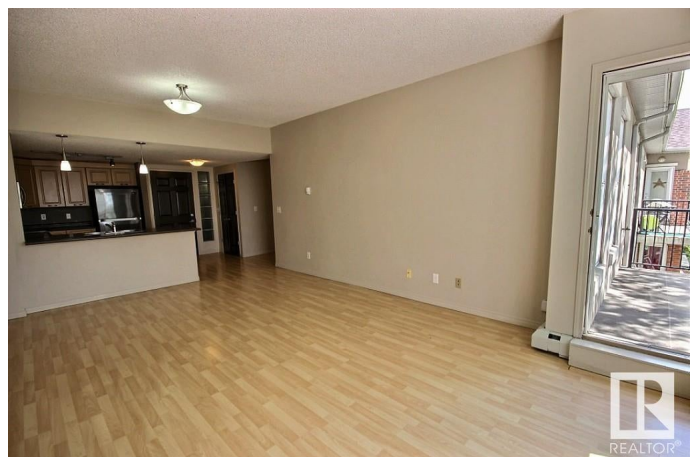
Belvedere, Edmonton, AB

Bright and Sunny South Facing Unit on the 2nd floor of a well managed Concrete (less noise) building. This 2 bed/2 bath has over 900 sqr ft to call home. Many features including balcony with natural gas, in suite laundry, walk through closet, plus additional storage locker in the underground parking. There is an elevator conveniently located across the hall which is close to your underground parking stall. The large windows allow plenty of natural light. The building also includes a workout room, courtyard, and quick access to public transit (both bus and LRT). WALKING DISTANCE to Londonderry Mall. All appliances included and Immediate possession is available. Act Now!

Built in 2006

Essential Information

| | |
|----------------|-------------------|
| MLS® # | E4436957 |
| Price | \$186,000 |
| Bedrooms | 2 |
| Bathrooms | 2.00 |
| Full Baths | 2 |
| Square Footage | 949 |
| Acres | 0.00 |
| Year Built | 2006 |
| Type | Condo / Townhouse |



| | |
|----------|------------------------|
| Sub-Type | Lowrise Apartment |
| Style | Single Level Apartment |
| Status | Active |

Community Information

| | |
|-------------|---------------------|
| Address | 208 6220 134 Avenue |
| Area | Edmonton |
| Subdivision | Belvedere |
| City | Edmonton |
| County | ALBERTA |
| Province | AB |
| Postal Code | T6A 0A8 |

Amenities

| | |
|-----------|--|
| Amenities | Deck, Detectors Smoke, Hot Water Instant, Intercom, No Smoking Home, Parking-Visitor, Storage Cage |
| Parking | Stall, Underground |

Interior

| | |
|-------------------|--|
| Interior Features | ensuite bathroom |
| Appliances | Dishwasher-Built-In, Garage Opener, Microwave Hood Fan, Refrigerator, Stacked Washer/Dryer, Stove-Electric |
| Heating | Baseboard, Natural Gas |
| # of Stories | 4 |
| Stories | 1 |
| Has Basement | Yes |
| Basement | None, No Basement |

Exterior

| | |
|-------------------|---|
| Exterior | Concrete, Brick, Stucco |
| Exterior Features | Low Maintenance Landscape, Playground Nearby, Public Transportation, Schools, Shopping Nearby |
| Roof | Asphalt Shingles |
| Construction | Concrete, Brick, Stucco |
| Foundation | Concrete Perimeter |

Additional Information

| | |
|----------------|----------------|
| Date Listed | May 16th, 2025 |
| Days on Market | 22 |
| Zoning | Zone 02 |

Condo Fee \$646

DATA IS DEEMED RELIABLE BUT IS NOT GUARANTEED ACCURATE BY THE REALTORS® ASSOCIATION OF EDMONTON. COPYRIGHT 2025 BY THE REALTORS® ASSOCIATION OF EDMONTON. ALL RIGHTS RESERVED.Trademarks are owned or controlled by the Canadian Real Estate Association (CREA) and identify real estate professionals who are members of CREA (REALTOR®, REALTORS®) and/or the quality of services they provide (MLS®, Multiple Listing Service®)
Listing information last updated on June 7th, 2025 at 5:17am MDT