

\$375,000 - 31 Deer Park Way, Spruce Grove

MLS® #E4436867

\$375,000

4 Bedroom, 3.00 Bathroom, 1,052 sqft

Single Family on 0.00 Acres

Deer Park_SPGR, Spruce Grove, AB

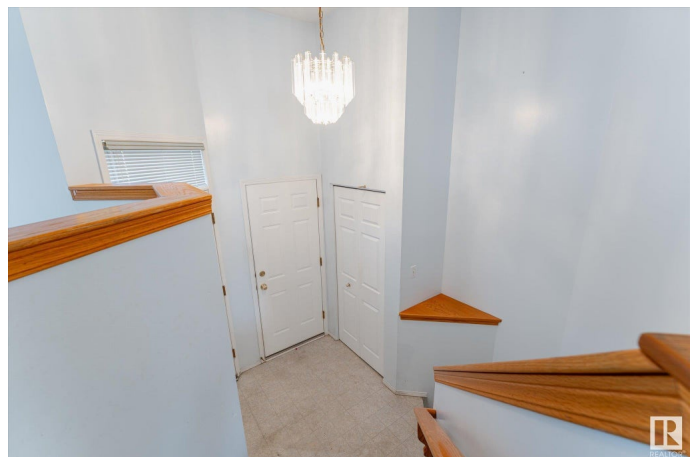
Unbeatable value! This 4 bedroom 1052 sq ft home is ready for you to bring your personal decorating touch to. Vaulted ceilings and abundant windows welcome you into this open space. The country kitchen features a pantry, corner sink and patio doors that lead to your deck and fully fenced sunny south facing yard.

2 bedrooms are upstairs including a master bedroom with walk in closet and full 4 piece ensuite with Jet tub. Downstairs is a perfect hang out space for teens or out of town guests. Relax around the family room that is anchored by a corner gas fireplace with large windows. There are also two additional bedrooms and a 3 piece bathroom with shower. The double garage leads to an aggregate stone driveway with extra parking. All of this, located on a quiet street. Shingles were replaced approximately 10 years ago, and quick possession is available.

Built in 1997

Essential Information

MLS® #	E4436867
Price	\$375,000
Bedrooms	4
Bathrooms	3.00
Full Baths	3
Square Footage	1,052



Acres	0.00
Year Built	1997
Type	Single Family
Sub-Type	Detached Single Family
Style	Bi-Level
Status	Active

Community Information

Address	31 Deer Park Way
Area	Spruce Grove
Subdivision	Deer Park_SPGR
City	Spruce Grove
County	ALBERTA
Province	AB
Postal Code	T7X 3K4

Amenities

Amenities	Deck, Storage-In-Suite, Vaulted Ceiling
Parking Spaces	4
Parking	Double Garage Attached

Interior

Interior Features	ensuite bathroom
Appliances	Dishwasher-Built-In, Dryer, Garage Control, Garage Opener, Refrigerator, Stove-Electric, Washer, Window Coverings
Heating	Forced Air-1, Natural Gas
Fireplace	Yes
Fireplaces	Corner
Stories	2
Has Basement	Yes
Basement	Full, Finished

Exterior

Exterior	Wood, Vinyl
Exterior Features	Fenced, Golf Nearby, Landscaped, Playground Nearby, Public Transportation, Schools, Shopping Nearby
Roof	Asphalt Shingles
Construction	Wood, Vinyl
Foundation	Concrete Perimeter

Additional Information

Date Listed May 16th, 2025
Days on Market 13
Zoning Zone 91

DATA IS DEEMED RELIABLE BUT IS NOT GUARANTEED ACCURATE BY THE REALTORS® ASSOCIATION OF EDMONTON. COPYRIGHT 2025 BY THE REALTORS® ASSOCIATION OF EDMONTON. ALL RIGHTS RESERVED.Trademarks are owned or controlled by the Canadian Real Estate Association (CREA) and identify real estate professionals who are members of CREA (REALTOR®, REALTORS®) and/or the quality of services they provide (MLS®, Multiple Listing Service®)
Listing information last updated on May 29th, 2025 at 2:02am MDT