

\$619,000 - 7012 54 Avenue, Beaumont

MLS® #E4436715

\$619,000

3 Bedroom, 2.50 Bathroom, 2,031 sqft

Single Family on 0.00 Acres

Elan, Beaumont, AB

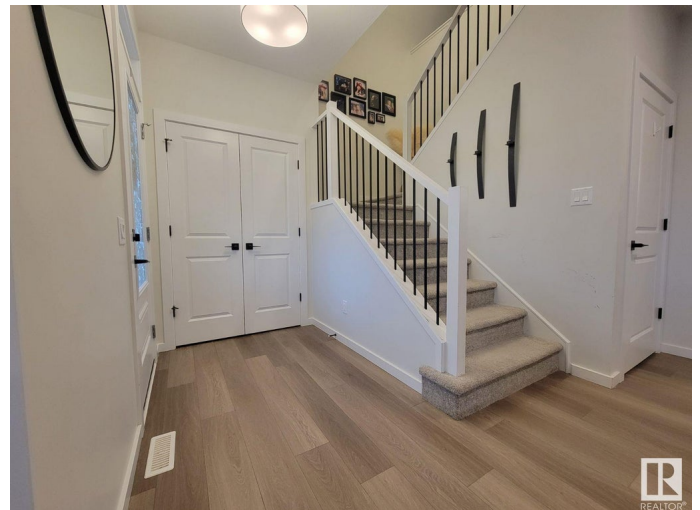
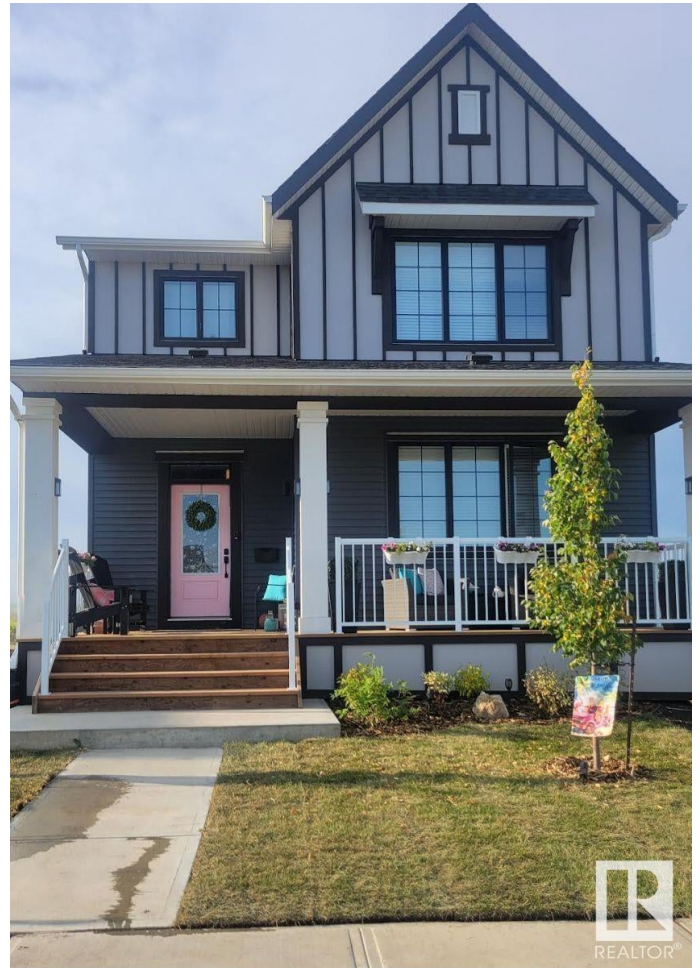
Visit the Listing Brokerage (and/or listing REALTOR®) website to obtain additional information. Experience upscale living in this stunning Donovan model by Homes by Avi, built in 2023 and ideally located across from a serene park in one of Beaumont's most sought-after communities. Boasting over 2,000 sq ft, this elegant home offers 3 spacious bedrooms, 2.5 baths, an upper bonus room, and a versatile main floor flex space—perfect for a home office or den. The open-concept main floor features luxury vinyl plank flooring, an electric fireplace, and a chef-inspired kitchen with quartz countertops, full-height cabinetry, stainless steel appliances, and a generous island. Enjoy the convenience of main-floor laundry and a stylish powder room. The primary suite impresses with a large walk-in closet and a spa-like 5-piece ensuite. A 10x10 deck, a fully landscaped yard, and an oversized double detached garage with lane access complete the package. With park views, access to top schools, trails, and amenities.

Built in 2023

Essential Information

MLS® # E4436715

Price \$619,000



Bedrooms	3
Bathrooms	2.50
Full Baths	2
Half Baths	1
Square Footage	2,031
Acres	0.00
Year Built	2023
Type	Single Family
Sub-Type	Detached Single Family
Style	2 Storey
Status	Active

Community Information

Address	7012 54 Avenue
Area	Beaumont
Subdivision	Elan
City	Beaumont
County	ALBERTA
Province	AB
Postal Code	T4X 2Z9

Amenities

Amenities	Deck, Detectors Smoke, Front Porch
Parking Spaces	2
Parking	Double Garage Detached

Interior

Interior Features	ensuite bathroom
Appliances	See Remarks
Heating	Forced Air-1, Natural Gas
Fireplace	Yes
Fireplaces	Mantel
Stories	2
Has Basement	Yes
Basement	Full, Unfinished

Exterior

Exterior	Wood, Composition
Exterior Features	Airport Nearby, Back Lane, Landscaped, Picnic Area, Playground

	Nearby, Schools, Shopping M
Roof	Asphalt Shingles
Construction	Wood, Composition
Foundation	Concrete Perimeter



Additional Information

Date Listed	May 15th, 2025
Days on Market	14
Zoning	Zone 82

DATA IS DEEMED RELIABLE BUT IS NOT GUARANTEED ACCURATE BY THE REALTORS® ASSOCIATION OF EDMONTON. COPYRIGHT 2025 BY THE REALTORS® ASSOCIATION OF EDMONTON. ALL RIGHTS RESERVED.Trademarks are owned or controlled by the Canadian Real Estate Association (CREA) and identify real estate professionals who are members of CREA (REALTOR®, REALTORS®) and/or the quality of services they provide (MLS®, Multiple Listing Service®)

Listing information last updated on May 29th, 2025 at 11:18am MDT