

Courtesy Of Derek Bryer Of Exp Realty

## \$465,000 - 90 Kingsbury Circle, Spruce Grove

MLS® #E4434190

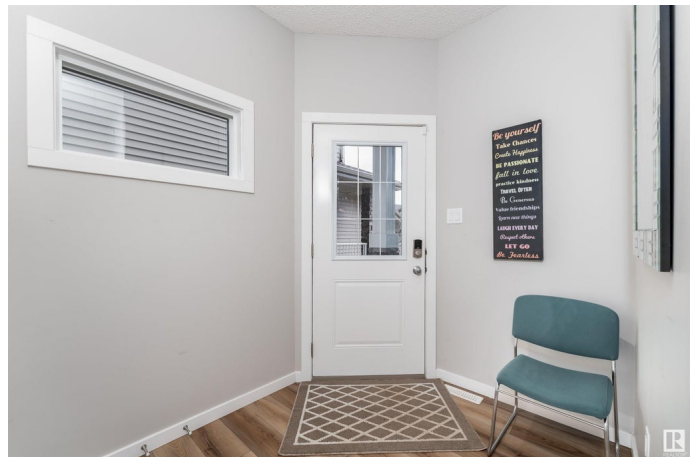
**\$465,000**

4 Bedroom, 3.50 Bathroom, 1,707 sqft

Single Family on 0.00 Acres

Kenton, Spruce Grove, AB

Absolute Showstopper! Welcome to this stunning half duplex in the desirable community of Kenton. Built in 2021 by Bedrock Homes, this modern, open-concept home offers a bright and spacious layout perfect for today's lifestyle. Featuring 4 bedrooms, 3.5 bathrooms, and a versatile bonus room, this home also includes a fully finished basement with a secondary living space complete with a kitchen showcasing beautiful butcher block countertops, perfect for extended family or guests. The main and upper levels are appointed with quartz countertops and contemporary lighting throughout. The sleek white kitchen is a true centerpiece, boasting stainless steel appliances, an undermount sink, and a huge island ideal for entertaining. The primary bedroom offers a serene retreat, complete with a large walk-in closet and a luxurious 4-piece ensuite. For added convenience, the kitchen, upper bedrooms, and bonus room are pre-wired for cable and internet. Tech-savvy buyers will love the Smart Home features, including



Built in 2021

### Essential Information

MLS® # E4434190

Price \$465,000

Bedrooms	4
Bathrooms	3.50
Full Baths	3
Half Baths	1
Square Footage	1,707
Acres	0.00
Year Built	2021
Type	Single Family
Sub-Type	Half Duplex
Style	2 Storey
Status	Active

### Community Information

Address	90 Kingsbury Circle
Area	Spruce Grove
Subdivision	Kenton
City	Spruce Grove
County	ALBERTA
Province	AB
Postal Code	T7X 0C9

### Amenities

Amenities	Ceiling 9 ft., No Animal Home, No Smoking Home, HRV System
Parking	Double Garage Attached

### Interior

Interior Features	ensuite bathroom
Appliances	Dishwasher-Built-In, Dryer, Garage Control, Garage Opener, Microwave Hood Fan, Oven-Microwave, Refrigerator, Washer, Window Coverings, Stove-Induction
Heating	Forced Air-1, Natural Gas
Fireplace	Yes
Fireplaces	Insert
Stories	3
Has Basement	Yes
Basement	Full, Finished

### Exterior

Exterior	Wood, Stone, Vinyl
----------	--------------------

Exterior Features	Fenced, Flat Site, Landscaped, Partially Landscaped, Playground Nearby, Schools, Shopping Nearby
Roof	Asphalt Shingles
Construction	Wood, Stone, Vinyl
Foundation	Concrete Perimeter

**School Information**

Elementary	Brookwood
Middle	Greystone Centennial
High	Spruce Grove Composite

**Additional Information**

Date Listed	May 2nd, 2025
Days on Market	30
Zoning	Zone 91

DATA IS DEEMED RELIABLE BUT IS NOT GUARANTEED ACCURATE BY THE REALTORS® ASSOCIATION OF EDMONTON. COPYRIGHT 2025 BY THE REALTORS® ASSOCIATION OF EDMONTON. ALL RIGHTS RESERVED.Trademarks are owned or controlled by the Canadian Real Estate Association (CREA) and identify real estate professionals who are members of CREA (REALTOR®, REALTORS®) and/or the quality of services they provide (MLS®, Multiple Listing Service®)

Listing information last updated on June 1st, 2025 at 9:31am MDT