

\$5,500,000 - 16420 26 Street, Edmonton

MLS® #E4365263

\$5,500,000

0 Bedroom, 0.00 Bathroom,
Land Commercial on 0.00 Acres

Gorman, Edmonton, AB

PRIME PIECE OF LAND FOR FUTURE DEVELOPMENT GREAT ACCESS TO ANTHONY HENDAY AND EXPOSURE. FUTURE LRT STATION CLOSE MAJOR STORES CANADIAN TIRE,LOWES,HOME DEPOT,COSTCO,ETC.ALL SERVICES ARE NEARBY.

Essential Information

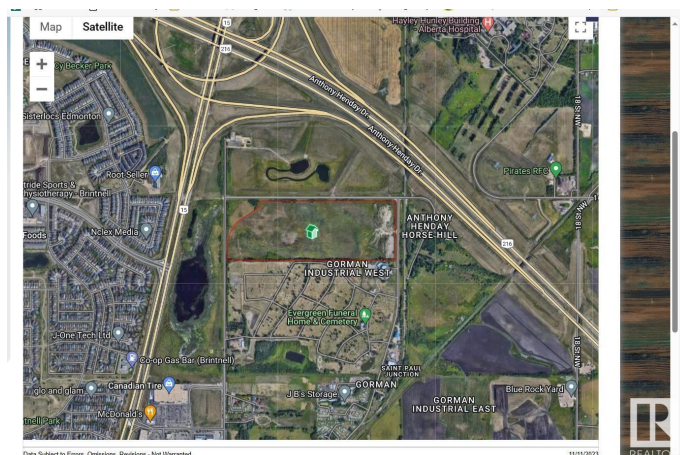
MLS® #	E4365263
Price	\$5,500,000
Bathrooms	0.00
Acres	0.00
Type	Land Commercial
Status	Active

Community Information

Address	16420 26 Street
Area	Edmonton
Subdivision	Gorman
City	Edmonton
County	ALBERTA
Province	AB
Postal Code	T5Y 2J9

Additional Information

Date Listed	November 14th, 2023
-------------	---------------------



Days on Market 570

Zoning Zone 03

DATA IS DEEMED RELIABLE BUT IS NOT GUARANTEED ACCURATE BY THE REALTORS® ASSOCIATION OF EDMONTON. COPYRIGHT 2025 BY THE REALTORS® ASSOCIATION OF EDMONTON. ALL RIGHTS RESERVED. Trademarks are owned or controlled by the Canadian Real Estate Association (CREA) and identify real estate professionals who are members of CREA (REALTOR®, REALTORS®) and/or the quality of services they provide (MLS®, Multiple Listing Service®)

Listing information last updated on June 6th, 2025 at 6:47am MDT